

Air Conditioning  
Technical Data

**FTX-KV**



- > FTX20K2V1B
- > FTX25K2V1B
- > FTX35K2V1B
- > FTX50K2V1B
- > FTX60K2V1B
- > FTX71K2V1B



# TABLE OF CONTENTS

## FTX-KV

1	Features .....	2
2	Specifications .....	3
	Technical Specifications .....	3
	Electrical Specifications .....	4
3	Options .....	5
4	Dimensional drawings .....	7
5	Centre of gravity .....	8
6	Piping diagrams .....	10
7	Wiring diagrams .....	13
	Wiring Diagrams - Single Phase .....	13
8	Sound data .....	14
	Sound Pressure Spectrum .....	14

# 1 Features

Discreet wall mounted unit providing high efficiency and comfort

- Whisper quiet in operation down to 20 dBA
- Online controller: control your indoor from any location with an app, via your local network or internet
- The unit's compact dimensions makes it ideal for renovation projects, especially for above door installation
- Seasonal efficiency values up to A++ in cooling and heating
- Space saving contemporary wall mounted design

1



Econo mode



Energy saving during standby mode



Night set mode



Fan only



Comfort mode



Powerful mode



Auto cooling-heating changeover



Indoor unit silent operation



Vertical auto swing



Auto fan speed



Fan speed steps



Dry programme



Titanium apatite deodorising filter



Infrared remote control



Wired remote control



Online controller via app



Auto-restart



Self diagnosis



Multi model application

## 2 Specifications

2-1 Technical Specifications				FTX20KV	FTX25KV	FTX35KV	FTX50KV	FTX60KV	FTX71KV	
Power input	Cooling	Nom.	kW	0.018	0.020	0.024	0.035	0.041		
	Heating	Nom.	kW	0.022	0.023	0.029	0.038	0.044		
Casing	Colour			White						
Dimensions	Unit	Height/Width/Depth	mm	286/770/225			295/990/263			
	Packed unit	Height/Width/Depth	mm	305/830/360			368/1,080/383			
Weight	Unit			kg	8.5	9.0	13.5			
	Packed unit			kg	10.5	11.0	16.0			
Packing	Weight			kg	2.0		2.5			
Heat exchanger	Length		mm	610			820			
	Rows	Quantity		2						
	Fin pitch		mm	1.40						
	Stages	Quantity		18						
	Passes	Quantity		2.25	2.20	6				
	Tube type		ø5 Hi-XB							
	Fin	Type		ML fin (Multi louver)						
Heat exchanger 2	Length		mm	-	600	810				
	Rows	Quantity		-		1				
	Fin pitch		mm	-		1.40				
	Stages	Quantity		-		4	8			
Air filter	Type			Removable / washable						
Fan	Type			Cross flow fan						
	Air flow rate	Cooling	High	m³/min	9.9	10.4	11.8	16.0	17.6	
				cfm	350	367	417	565	622	
			Medium	m³/min	7.8 (1)	8.0 (1)	8.2 (1)	13.7 (1)	14.9 (1)	
				cfm	275	283	290	484	526	
			Low	m³/min	5.8	6.1	6.3	11.1	12.2	
				cfm	205	215	222	392	431	
		Silent operation	m³/min	4.8		4.9	10.1	11.2		
			cfm	170		173	357	396		
		Heating	High	m³/min	10.9	11.1	12.8	16.7	18.9	
				cfm	385	392	452	590	667	
			Medium	m³/min	8.5 (1)			14.7 (1)	16.7 (1)	
				cfm	300			519	590	
	Low		m³/min	6.4	6.7	6.9	12.2	13.7		
			cfm	226	237	244	431	484		
Silent operation	m³/min	5.2		10.9	12.1					
	cfm	184		385	427					
Fan motor	Model			MM6K11S20VA			MM9E17S21VA			
	Speed	Steps		5 + silent, + auto						
		Cooling	High/Medium/Low/Silent operation	rpm	980/800/640/550	1,020/820/660/550	1,140/840/680/560	1,000/890/760/690	1,070/950/820/750	
				rpm	1,060/860/690/590	1,080/860/710/590	1,220/900/730/590	1,030/910/790/720	1,110/1,010/870/790	
		Heating	High/Medium/Low/Silent operation	rpm	1,060/860/690/590	1,080/860/710/590	1,220/900/730/590	1,030/910/790/720	1,110/1,010/870/790	
rpm	1,060/860/690/590			1,080/860/710/590	1,220/900/730/590	1,030/910/790/720	1,110/1,010/870/790			
Output	Rated		W	22			46			
Sound power level	Cooling		dBA	55		58	59	60	62	
	Heating		dBA	55		58		59	61	

## 2 Specifications

2

2-1 Technical Specifications				FTX20KV	FTX25KV	FTX35KV	FTX50KV	FTX60KV	FTX71KV
Sound pressure level	Cooling	High/Medium/ Low/Silent operation	dBa	39/33 (1)/25/20	40/33 (1)/26/20	43/34 (1)/27/20	43/39 (1)/34/31	45/41 (1)/36/33	46/42 (1)/37/34
	Heating	High/Medium/ Low/Silent operation	dBa	39/34/28/23	40/34/28/23	43/35/29/26	42/38/33/30	44/40/35/32	45/41/36/33
Control systems	Infrared remote control			ARC480A11					
	Wired remote control			BRC944B2 / BRC073A1			BRC944B2 / BRC073		
Piping connections	Liquid	OD	6,4						
	Gas	OD	9.50			12.70			
	Drain		18			16			
	Heat insulation			Both liquid and gas pipes					
Temperature control				Microcomputer control					
Air direction control				Right, Left, Horizontal, Downward					

Standard Accessories : Installation manual; Quantity : 1;

Standard Accessories : Operation manual; Quantity : 1;

Standard Accessories : Infrared remote control; Quantity : 1;

Standard Accessories : AAA dry-cell batteries; Quantity : 2;

Standard Accessories : Remote control holder; Quantity : 1;

Standard Accessories : Mounting plate; Quantity : 1;

Standard Accessories : Titanium apatite deodorizing filter; Quantity : 2;

Standard Accessories : Indoor unit fixing screws; Quantity : 2;

2-2 Electrical Specifications				FTX20KV	FTX25KV	FTX35KV	FTX50KV	FTX60KV	FTX71KV
Power supply	Name			V1			-		
	Phase			1~					
	Frequency		Hz	50					
	Voltage		V	220-240					
Current	Nominal running current (RLA) - 50Hz	Cooling	A	0.18	0.20		0.24	0.28	
		Heating	A	0.21	0.22	0.24	0.26	0.31	

### Notes

(1) See separate drawing for electrical data

# 3 Options

## 3 - 1 Options

### FTX-KV

Option kit	Product name	Remark	Applicable models														Factory	
			Class		Range		20		25		35		50		71			
			FTX20LURW	FTX25LURW	FTX35LURW	FTX50LURW	FTX71LURW	FTX20LURB	FTX25LURB	FTX35LURB	FTX50LURB	FTX71LURB	FTX20LURV	FTX25LURV	FTX35LURV	FTX50LURV	FTX71LURV	
Wired remote control	BRC073A1		✓	✓	✓	✓	✓	✓	✓	✓	✓	✓	✓	✓	✓	✓	✓	✓
Wired remote control	BRC944B2		✓	✓	✓	✓	✓	✓	✓	✓	✓	✓	✓	✓	✓	✓	✓	✓
Extension cord for wired remote control (3-m)	BRCW901A03		✓	✓	✓	✓	✓	✓	✓	✓	✓	✓	✓	✓	✓	✓	✓	✓
Extension cord for wired remote control (5-m)	BRCW901A08		✓	✓	✓	✓	✓	✓	✓	✓	✓	✓	✓	✓	✓	✓	✓	✓
Interface adaptor for wired remote control	KRP980B1		✓	✓	✓	✓	✓	✓	✓	✓	✓	✓	✓	✓	✓	✓	✓	✓
Interface adaptor for wired remote control	EKRPO67A41		✓	✓	✓	✓	✓	✓	✓	✓	✓	✓	✓	✓	✓	✓	✓	✓
Interface adaptor for wired remote control	EKR980B2		✓	✓	✓	✓	✓	✓	✓	✓	✓	✓	✓	✓	✓	✓	✓	✓
Centralised control board (up to 5-rooms)	KRC72A		✓	✓	✓	✓	✓	✓	✓	✓	✓	✓	✓	✓	✓	✓	✓	✓
Wiring adaptor (normal open contact - normal open pulse contact)	KRP413AB15		✓	✓	✓	✓	✓	✓	✓	✓	✓	✓	✓	✓	✓	✓	✓	✓
Wi-Fi adaptor for smartphones	BRP069B41	④⑥	✓	✓	✓	✓	✓	✓	✓	✓	✓	✓	✓	✓	✓	✓	✓	✓
Wi-Fi adaptor for smartphones	BRP069B42	⑥	✓	✓	✓	✓	✓	✓	✓	✓	✓	✓	✓	✓	✓	✓	✓	✓
Wi-Fi adaptor for smartphones	BRP069B43	⑥	✓	✓	✓	✓	✓	✓	✓	✓	✓	✓	✓	✓	✓	✓	✓	✓
Wi-Fi adaptor for smartphones	BRP069A44	⑦	✓	✓	✓	✓	✓	✓	✓	✓	✓	✓	✓	✓	✓	✓	✓	✓
Wi-Fi adaptor for smartphones	BRP069B45	⑥	✓	✓	✓	✓	✓	✓	✓	✓	✓	✓	✓	✓	✓	✓	✓	✓
Interface adaptor for DIII-NET	KRP928B25		✓	✓	✓	✓	✓	✓	✓	✓	✓	✓	✓	✓	✓	✓	✓	✓
Central remote control	DCS302CA51		✓	✓	✓	✓	✓	✓	✓	✓	✓	✓	✓	✓	✓	✓	✓	✓
Unified ON/OFF controller	DCS301BA51		✓	✓	✓	✓	✓	✓	✓	✓	✓	✓	✓	✓	✓	✓	✓	✓
Schedule timer	DST301BA51		✓	✓	✓	✓	✓	✓	✓	✓	✓	✓	✓	✓	✓	✓	✓	✓
Titanium apatite deodorising filter without frame	KAF971A42	①	✓	✓	✓	✓	✓	✓	✓	✓	✓	✓	✓	✓	✓	✓	✓	✓
Titanium apatite deodorising filter without frame	KAF952B42	③	✓	✓	✓	✓	✓	✓	✓	✓	✓	✓	✓	✓	✓	✓	✓	✓
Titanium apatite deodorising filter without frame	KAF970A46	②	✓	✓	✓	✓	✓	✓	✓	✓	✓	✓	✓	✓	✓	✓	✓	✓
Honeycomb deodorising and air-purifying filter without frame	KAF968A42		✓	✓	✓	✓	✓	✓	✓	✓	✓	✓	✓	✓	✓	✓	✓	✓
Honeycomb deodorising filter with frame	KAZ917B41		✓	✓	✓	✓	✓	✓	✓	✓	✓	✓	✓	✓	✓	✓	✓	✓
Honeycomb deodorising filter without frame	KAZ917B42		✓	✓	✓	✓	✓	✓	✓	✓	✓	✓	✓	✓	✓	✓	✓	✓
Air-purifying filter with frame	KAF925B41		✓	✓	✓	✓	✓	✓	✓	✓	✓	✓	✓	✓	✓	✓	✓	✓
Honeycomb deodorising and air-purifying filter with frame	KAF046A41		✓	✓	✓	✓	✓	✓	✓	✓	✓	✓	✓	✓	✓	✓	✓	✓
Anti-theft protection for remote control	KKF910AA4		✓	✓	✓	✓	✓	✓	✓	✓	✓	✓	✓	✓	✓	✓	✓	✓
Anti-theft protection for remote control	KKF917AA4		✓	✓	✓	✓	✓	✓	✓	✓	✓	✓	✓	✓	✓	✓	✓	✓
Anti-theft protection for remote control	KKF936AA4		✓	✓	✓	✓	✓	✓	✓	✓	✓	✓	✓	✓	✓	✓	✓	✓
Installation frame for floor-standing units	BKS028A4		✓	✓	✓	✓	✓	✓	✓	✓	✓	✓	✓	✓	✓	✓	✓	✓

Notes

- 1. R410A models

Legend

- ① Three-dimensional knitted fabric (-42x275-mm) + activated charcoal net
- ② Three-dimensional knitted fabric (-42x255-mm) + activated charcoal net
- ③ Corrugated fiberboard (-42x275-mm)
- ④ Without connection cable
- ⑤ The "Wi-Fi adaptor for smartphones" is not an option for Israel.
- ⑥ Option ·BRP069A\*\*· was replaced by option ·BRP069B\*\*·.
- ⑦ This option is no longer produced.

3D095247N

### FTX-KV

Option kit	Product name	Remark	Applicable models														Factory	
			Class		Range		25		35		50		71		71			
			FXM25K2V1B	FXM35K2V1B	FXM50K2V1B	FXM71K2V1B	FXM25K3V1B	FXM35K3V1B	FXM50K3V1B	FXM71K3V1B	FXM25K4V1B	FXM35K4V1B	FXM50K4V1B	FXM71K4V1B	FXM25K5V1B	FXM35K5V1B	FXM50K5V1B	FXM71K5V1B
Wired remote control	BRC073A1		✓	✓	✓	✓	✓	✓	✓	✓	✓	✓	✓	✓	✓	✓	✓	✓
Wired remote control	BRC944B2		✓	✓	✓	✓	✓	✓	✓	✓	✓	✓	✓	✓	✓	✓	✓	✓
Extension cord for wired remote control (3-m)	BRCW901A03		✓	✓	✓	✓	✓	✓	✓	✓	✓	✓	✓	✓	✓	✓	✓	✓
Extension cord for wired remote control (5-m)	BRCW901A08		✓	✓	✓	✓	✓	✓	✓	✓	✓	✓	✓	✓	✓	✓	✓	✓
Interface adaptor for wired remote control	KRP980B1		✓	✓	✓	✓	✓	✓	✓	✓	✓	✓	✓	✓	✓	✓	✓	✓
Interface adaptor for wired remote control	EKRPO67A41		✓	✓	✓	✓	✓	✓	✓	✓	✓	✓	✓	✓	✓	✓	✓	✓
Interface adaptor for wired remote control	EKR980B2		✓	✓	✓	✓	✓	✓	✓	✓	✓	✓	✓	✓	✓	✓	✓	✓
Centralised control board (up to 5-rooms)	KRC72A		✓	✓	✓	✓	✓	✓	✓	✓	✓	✓	✓	✓	✓	✓	✓	✓
Wiring adaptor (normal open contact - normal open pulse contact)	KRP413AB15		✓	✓	✓	✓	✓	✓	✓	✓	✓	✓	✓	✓	✓	✓	✓	✓
Wi-Fi adaptor for smartphones	BRP069B41	④⑤	✓	✓	✓	✓	✓	✓	✓	✓	✓	✓	✓	✓	✓	✓	✓	✓
Wi-Fi adaptor for smartphones	BRP069B42	⑤	✓	✓	✓	✓	✓	✓	✓	✓	✓	✓	✓	✓	✓	✓	✓	✓
Wi-Fi adaptor for smartphones	BRP069B43	⑤	✓	✓	✓	✓	✓	✓	✓	✓	✓	✓	✓	✓	✓	✓	✓	✓
Wi-Fi adaptor for smartphones	BRP069A44	⑥	✓	✓	✓	✓	✓	✓	✓	✓	✓	✓	✓	✓	✓	✓	✓	✓
Wi-Fi adaptor for smartphones	BRP069B45	⑤	✓	✓	✓	✓	✓	✓	✓	✓	✓	✓	✓	✓	✓	✓	✓	✓
Interface adaptor for DIII-NET	KRP928B25		✓	✓	✓	✓	✓	✓	✓	✓	✓	✓	✓	✓	✓	✓	✓	✓
Central remote control	DCS302CA51		✓	✓	✓	✓	✓	✓	✓	✓	✓	✓	✓	✓	✓	✓	✓	✓
Unified ON/OFF controller	DCS301BA51		✓	✓	✓	✓	✓	✓	✓	✓	✓	✓	✓	✓	✓	✓	✓	✓
Schedule timer	DST301BA51		✓	✓	✓	✓	✓	✓	✓	✓	✓	✓	✓	✓	✓	✓	✓	✓
Titanium apatite deodorising filter without frame	KAF971A42	①	✓	✓	✓	✓	✓	✓	✓	✓	✓	✓	✓	✓	✓	✓	✓	✓
Titanium apatite deodorising filter without frame	KAF952B42	③	✓	✓	✓	✓	✓	✓	✓	✓	✓	✓	✓	✓	✓	✓	✓	✓
Titanium apatite deodorising filter without frame	KAF970A46	②	✓	✓	✓	✓	✓	✓	✓	✓	✓	✓	✓	✓	✓	✓	✓	✓
Titanium apatite deodorising filter with frame	BAF925D41		✓	✓	✓	✓	✓	✓	✓	✓	✓	✓	✓	✓	✓	✓	✓	✓
Titanium apatite deodorising filter without frame	KAF925B42		✓	✓	✓	✓	✓	✓	✓	✓	✓	✓	✓	✓	✓	✓	✓	✓
Honeycomb deodorising and air-purifying filter without frame	KAF968A42		✓	✓	✓	✓	✓	✓	✓	✓	✓	✓	✓	✓	✓	✓	✓	✓
Honeycomb deodorising filter with frame	KAZ917B41		✓	✓	✓	✓	✓	✓	✓	✓	✓	✓	✓	✓	✓	✓	✓	✓
Honeycomb deodorising filter without frame	KAZ917B42		✓	✓	✓	✓	✓	✓	✓	✓	✓	✓	✓	✓	✓	✓	✓	✓
Air-purifying filter with frame	KAF925B41		✓	✓	✓	✓	✓	✓	✓	✓	✓	✓	✓	✓	✓	✓	✓	✓
Honeycomb deodorising and air-purifying filter with frame	KAF046A41		✓	✓	✓	✓	✓	✓	✓	✓	✓	✓	✓	✓	✓	✓	✓	✓
Anti-theft protection for remote control	KKF910AA4		✓	✓	✓	✓	✓	✓	✓	✓	✓	✓	✓	✓	✓	✓	✓	✓
Anti-theft protection for remote control	KKF917AA4		✓	✓	✓	✓	✓	✓	✓	✓	✓	✓	✓	✓	✓	✓	✓	✓
Anti-theft protection for remote control	KKF936AA4		✓	✓	✓	✓	✓	✓	✓	✓	✓	✓	✓	✓	✓	✓	✓	✓
Installation frame for floor-standing units	BKS028A4		✓	✓	✓	✓	✓	✓	✓	✓	✓	✓	✓	✓	✓	✓	✓	✓

Notes

- 1. R410A models

Legend

- ① Three-dimensional knitted fabric (-42x275-mm) + activated charcoal net
- ② Three-dimensional knitted fabric (-42x255-mm) + activated charcoal net
- ③ Corrugated fiberboard (-42x275-mm)
- ④ Without connection cable
- ⑤ Option ·BRP069A\*\*· was replaced by option ·BRP069B\*\*·.
- ⑥ This option is no longer produced.

3D095247N

# 3 Options

## 3 - 1 Options

### FTX-KV

3

Option kit	Product name	Remark	Applicable models	Class											Casing		Factory								
				25	35	50	60	71	60	71	20	25	35	35	35	35		50	60	71					
				ATXL25ZV1B	ATXL35ZV1B	FTX50KVV1B	FTX60KVV1B	FTX71KVV1B	FTX60KZV1B	FTX71KZV1B	FTX20KZV1B1	FTX25KZV1B	FTX35KZV1B	FTX35KZV1B1	ATX20KVV1B	ATX25KVV1B	FTX35KVV1B	FTX35KVV1B1	ATX20KVV1B	ATX25KVV1B	FTX35KVV1B	FTX35KVV1B1	FTX50KVV1B	FTX60KVV1B	FTX71KVV1B
Wired remote control	BRC073A1			✓	✓	✓	✓	✓	✓	✓	✓	✓	✓	✓	✓	✓	✓	✓	✓	✓	✓	✓	✓	✓	✓
Wired remote control	BRC944B2			✓	✓	✓	✓	✓	✓	✓	✓	✓	✓	✓	✓	✓	✓	✓	✓	✓	✓	✓	✓	✓	✓
Extension cord for wired remote control (3-m)	BRCW901A03			✓	✓	✓	✓	✓	✓	✓	✓	✓	✓	✓	✓	✓	✓	✓	✓	✓	✓	✓	✓	✓	✓
Extension cord for wired remote control (5-m)	BRCW901A08			✓	✓	✓	✓	✓	✓	✓	✓	✓	✓	✓	✓	✓	✓	✓	✓	✓	✓	✓	✓	✓	✓
Interface adaptor for wired remote control	KRP980B1			✓	✓	✓	✓	✓	✓	✓	✓	✓	✓	✓	✓	✓	✓	✓	✓	✓	✓	✓	✓	✓	✓
Interface adaptor for wired remote control	EKRP067A41			✓	✓	✓	✓	✓	✓	✓	✓	✓	✓	✓	✓	✓	✓	✓	✓	✓	✓	✓	✓	✓	✓
Interface adaptor for wired remote control	EKRP980B2			✓	✓	✓	✓	✓	✓	✓	✓	✓	✓	✓	✓	✓	✓	✓	✓	✓	✓	✓	✓	✓	✓
Centralised control board (up to 5' rooms)	KRC72A			✓	✓	✓	✓	✓	✓	✓	✓	✓	✓	✓	✓	✓	✓	✓	✓	✓	✓	✓	✓	✓	✓
Wiring adaptor (normal open contact - normal open pulse contact)	KRP413A815			✓	✓	✓	✓	✓	✓	✓	✓	✓	✓	✓	✓	✓	✓	✓	✓	✓	✓	✓	✓	✓	✓
Wi-Fi adaptor for smartphones	BRP069B41	④ ⑤		✓	✓	✓	✓	✓	✓	✓	✓	✓	✓	✓	✓	✓	✓	✓	✓	✓	✓	✓	✓	✓	✓
Wi-Fi adaptor for smartphones	BRP069B42	⑥		✓	✓	✓	✓	✓	✓	✓	✓	✓	✓	✓	✓	✓	✓	✓	✓	✓	✓	✓	✓	✓	✓
Wi-Fi adaptor for smartphones	BRP069B43	⑥		✓	✓	✓	✓	✓	✓	✓	✓	✓	✓	✓	✓	✓	✓	✓	✓	✓	✓	✓	✓	✓	✓
Wi-Fi adaptor for smartphones	BRP069A44	⑦		✓	✓	✓	✓	✓	✓	✓	✓	✓	✓	✓	✓	✓	✓	✓	✓	✓	✓	✓	✓	✓	✓
Wi-Fi adaptor for smartphones	BRP069B45	⑥		✓	✓	✓	✓	✓	✓	✓	✓	✓	✓	✓	✓	✓	✓	✓	✓	✓	✓	✓	✓	✓	✓
Interface adaptor for DIII-NET	KRP928B75			✓	✓	✓	✓	✓	✓	✓	✓	✓	✓	✓	✓	✓	✓	✓	✓	✓	✓	✓	✓	✓	✓
Central remote control	DCS302CA51			✓	✓	✓	✓	✓	✓	✓	✓	✓	✓	✓	✓	✓	✓	✓	✓	✓	✓	✓	✓	✓	✓
Unified ON/OFF controller	DCS301BA51			✓	✓	✓	✓	✓	✓	✓	✓	✓	✓	✓	✓	✓	✓	✓	✓	✓	✓	✓	✓	✓	✓
Schedule timer	DS1301BA51			✓	✓	✓	✓	✓	✓	✓	✓	✓	✓	✓	✓	✓	✓	✓	✓	✓	✓	✓	✓	✓	✓
Titanium apatite deodorising filter without frame	KAF971A42	①		✓	✓	✓	✓	✓	✓	✓	✓	✓	✓	✓	✓	✓	✓	✓	✓	✓	✓	✓	✓	✓	✓
Titanium apatite deodorising filter without frame	KAF952B42	③		✓	✓	✓	✓	✓	✓	✓	✓	✓	✓	✓	✓	✓	✓	✓	✓	✓	✓	✓	✓	✓	✓
Titanium apatite deodorising filter without frame	KAF970A46	②		✓	✓	✓	✓	✓	✓	✓	✓	✓	✓	✓	✓	✓	✓	✓	✓	✓	✓	✓	✓	✓	✓
Honeycomb deodorising and air-purifying filter without frame	KAF968A42			✓	✓	✓	✓	✓	✓	✓	✓	✓	✓	✓	✓	✓	✓	✓	✓	✓	✓	✓	✓	✓	✓
Honeycomb deodorising filter with frame	KAZ917B41			✓	✓	✓	✓	✓	✓	✓	✓	✓	✓	✓	✓	✓	✓	✓	✓	✓	✓	✓	✓	✓	✓
Honeycomb deodorising filter without frame	KAZ917B42			✓	✓	✓	✓	✓	✓	✓	✓	✓	✓	✓	✓	✓	✓	✓	✓	✓	✓	✓	✓	✓	✓
Air-purifying filter with frame	KAF925B41			✓	✓	✓	✓	✓	✓	✓	✓	✓	✓	✓	✓	✓	✓	✓	✓	✓	✓	✓	✓	✓	✓
Honeycomb deodorising and air-purifying filter with frame	KAF046A41			✓	✓	✓	✓	✓	✓	✓	✓	✓	✓	✓	✓	✓	✓	✓	✓	✓	✓	✓	✓	✓	✓
Anti-theft protection for remote control	KKF910AA4			✓	✓	✓	✓	✓	✓	✓	✓	✓	✓	✓	✓	✓	✓	✓	✓	✓	✓	✓	✓	✓	✓
Anti-theft protection for remote control	KKF917AA4			✓	✓	✓	✓	✓	✓	✓	✓	✓	✓	✓	✓	✓	✓	✓	✓	✓	✓	✓	✓	✓	✓
Anti-theft protection for remote control	KKF936AA4			✓	✓	✓	✓	✓	✓	✓	✓	✓	✓	✓	✓	✓	✓	✓	✓	✓	✓	✓	✓	✓	✓
Installation frame for floor-standing units	BKS028A4			✓	✓	✓	✓	✓	✓	✓	✓	✓	✓	✓	✓	✓	✓	✓	✓	✓	✓	✓	✓	✓	✓

#### Notes

1. R410A models

#### Legend

- ① Three-dimensional knitted fabric (-42x275-mm) + activated charcoal net
- ② Three-dimensional knitted fabric (-42x255-mm) + activated charcoal net
- ③ Corrugated fiberboard (-42x275-mm)
- ④ Without connection cable
- ⑤ The "Wi-Fi adaptor for smartphones" is not an option for Israel.
- ⑥ Option -BRP069A\*\*- was replaced by option -BRP069B\*\*.
- ⑦ This option is no longer produced.

3D095247N



# 4 Dimensional drawings

## 4 - 1 Dimensional Drawings

### FTX20-35KV

The  $\rightarrow$  mark shows the piping direction.

**Required space for service and ventilation**

Indoor air flow Minimum space for air passage 30 min

Service space 50 min

Drain hose I.D.  $\varnothing$  14mm O.D.  $\varnothing$  16mm Connecting part Outside length about 470mm

Liquid pipe  $\varnothing$  6.4mm CuT Outside length about 410mm

Gas pipe  $\varnothing$  9.5mm CuT Outside length about 360mm

Signal receiver, Operation lamp, Timer lamp, Indoor unit ON/OFF switch, Room temperature sensor Located inside of the unit Nameplate

Terminal block with earth terminal Located inside of the unit

Blade angle

Up/down (automatic)

Cooling Dry 5° 50°

Heating 15° 65°

Fan 0° 65°

Left/right (manual)

45° 45°

Standard location of holes in the wall

770 536.6 116.5 7.9 285 44.5 48 44.5 48

Hole for embedding piping  $\varnothing$ 65 Hole

3D095753A

### FTX50-71KV

The  $\rightarrow$  mark shows the piping direction.

Applicable models: FTX50K2V1B/FTX60K2V1B/FTX71K2V1B

**Required space for service and ventilation**

Indoor air flow Minimum space for air passage 30 MIN

Service space 50 MIN

Gas pipe  $\varnothing$  12.7mm CuT about (440) mm

Drain hose Connecting part I.D.  $\varnothing$  14mm O.D.  $\varnothing$  16mm about (460) mm

Liquid pipe  $\varnothing$  6.4mm CuT

Signal receiver, Operation lamp, Timer lamp, Indoor unit On/OFF switch, Room temperature sensor Located inside of the unit

Terminal block with earth terminal Located inside of the unit

Blade angle

Up/down (automatic)

Cooling Dry 15° 30° 70°

Heating 20° 35° 90°

Fan 10° 65° 25° 80°

Left/right (manual)

45° 45°

Standard location of holes in the wall

990 746 126.5 14.5 295 52 48 52 60 14.5

Hole for embedded piping  $\varnothing$ 60

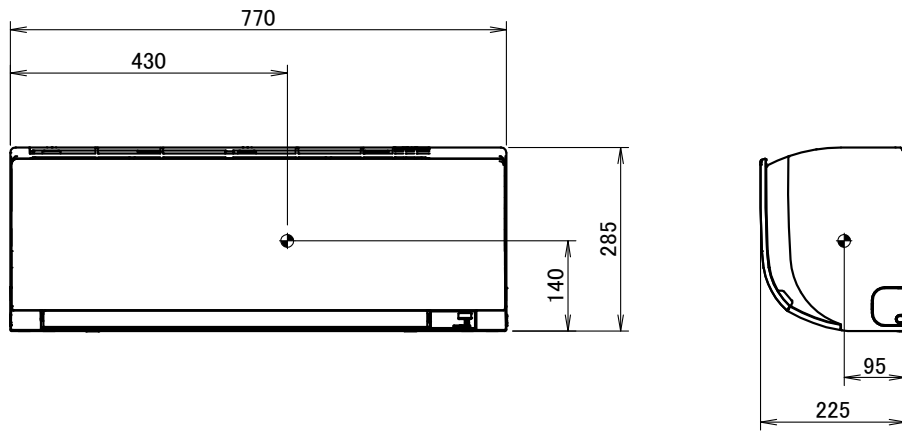
Wireless remote control (ARC480A11)

3D102959

# 5 Centre of gravity

## 5 - 1 Centre of Gravity

FTX20-35KV



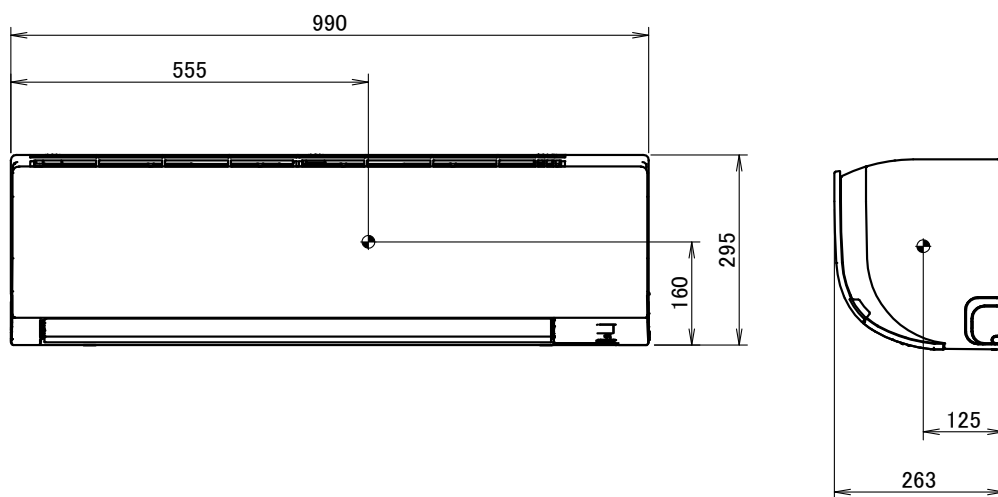
5

4D094235A

## 5 Centre of gravity

### 5 - 1 Centre of Gravity

FTX50-71KV



4D094259A

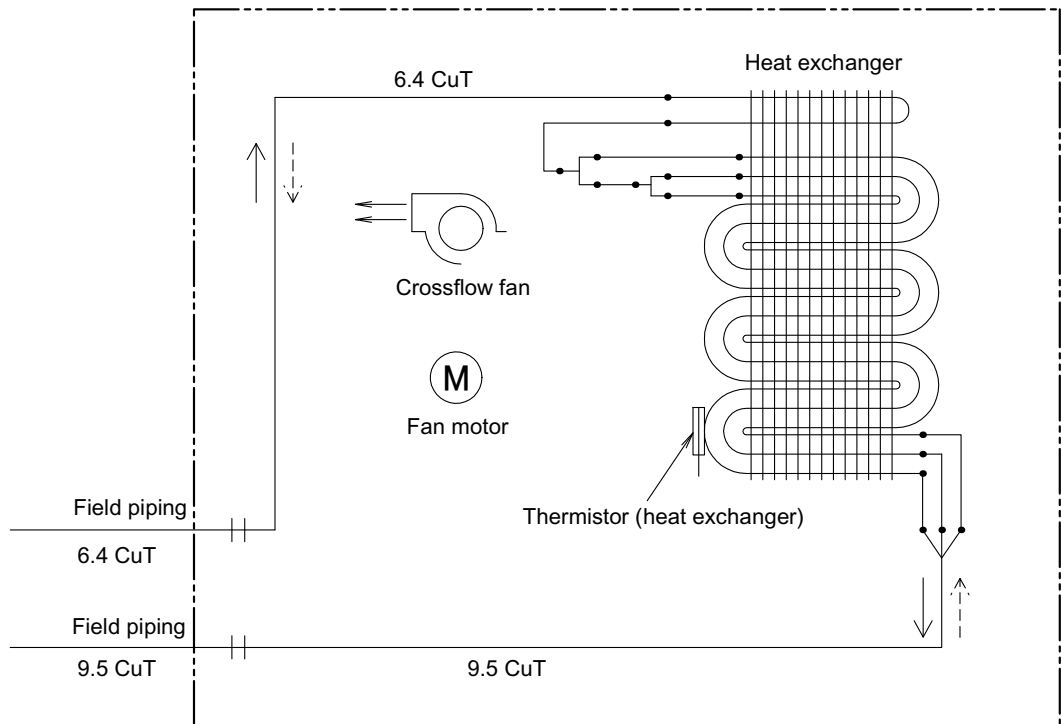
# 6 Piping diagrams

## 6 - 1 Piping Diagrams

### FTX20-25KV

6

#### Indoor unit



Refrigerant flow  
 —→ Cooling  
 - - - → Heating

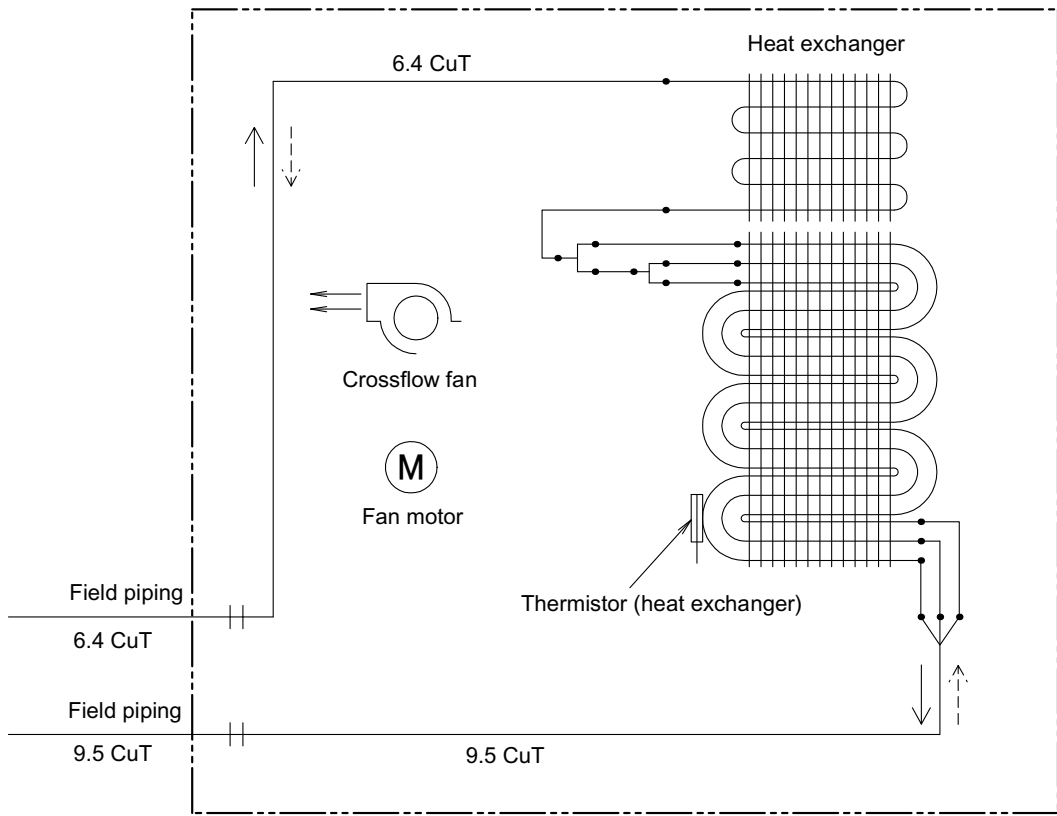
4D098105

# 6 Piping diagrams

## 6 - 1 Piping Diagrams

FTX35KV

### Indoor unit



Refrigerant flow  
 —> Cooling  
 - - -> Heating

4D098106

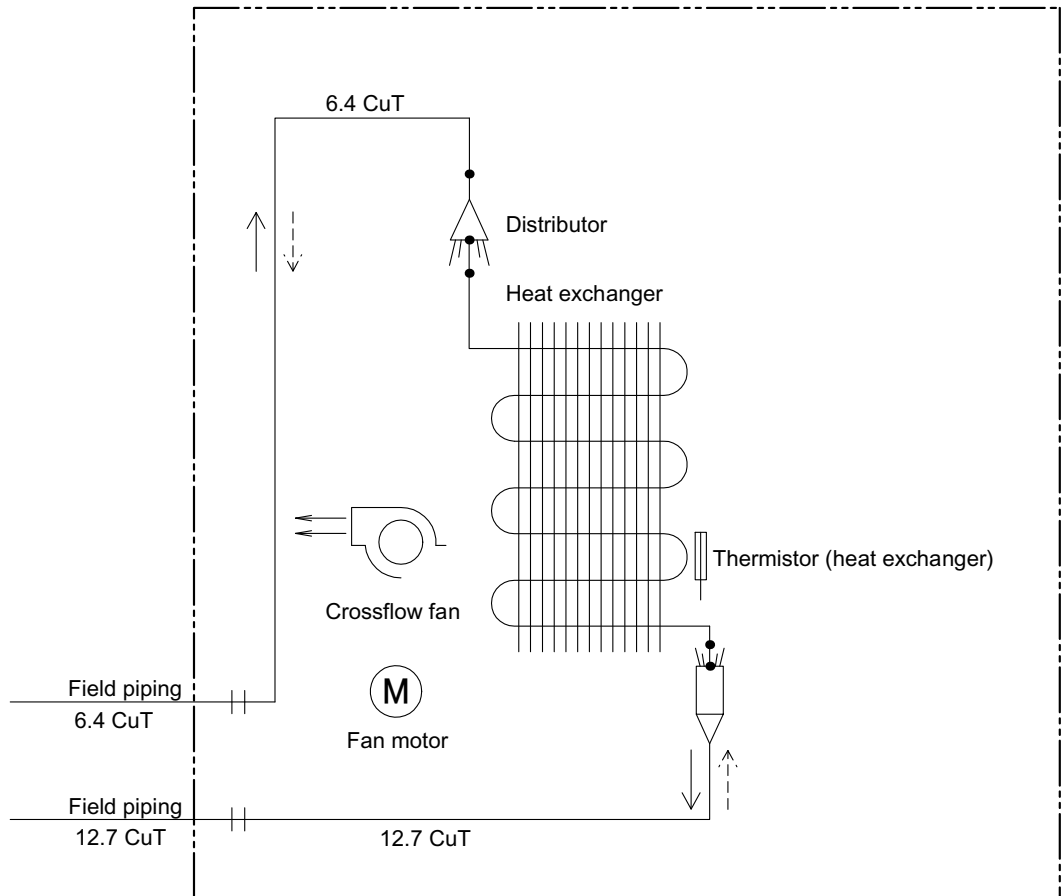
## 6 Piping diagrams

### 6 - 1 Piping Diagrams

6

# FTX50-71KV

## Indoor unit



Refrigerant flow

—> Cooling

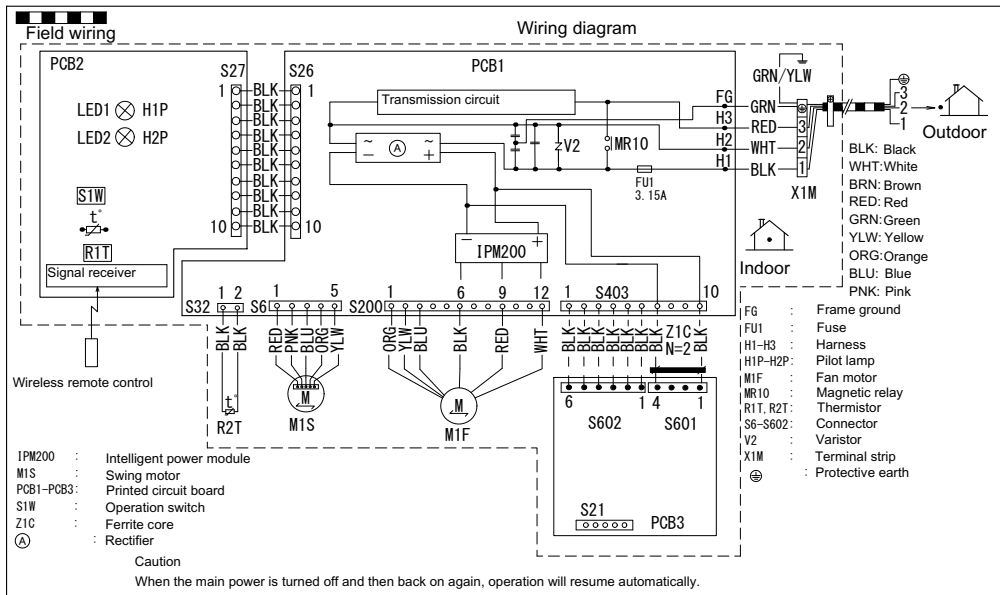
- - -> Heating

4D094179A

# 7 Wiring diagrams

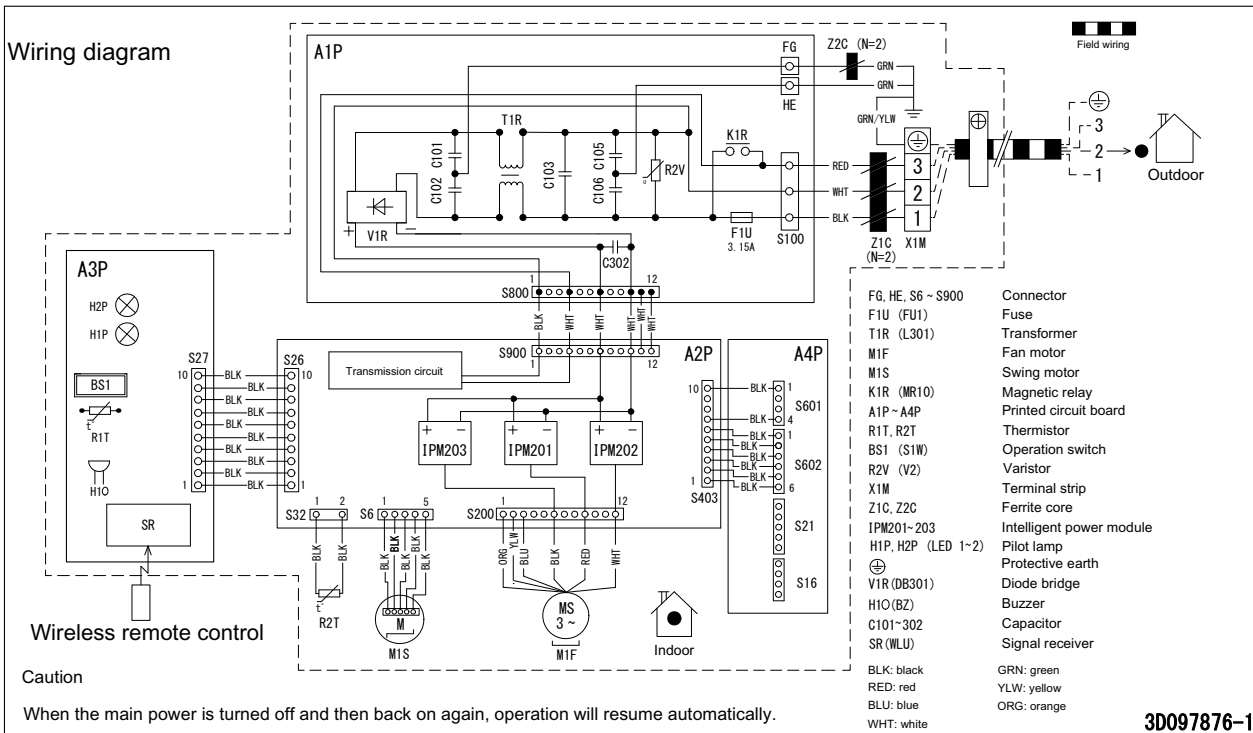
## 7 - 1 Wiring Diagrams - Single Phase

### FTX20-35KV



3D095416A

### FTX50-71KV



3D097876-1

**NOTES:**

- Size: length 65 X width 110.
- Refer to purchasing specification AS303002, unless otherwise specified.

Applicable models
FTX50KMV1B
FTX60KMV1B
FTX71KMV1B
FTX50K2V1B
FTX60K2V1B
FTX71K2V1B

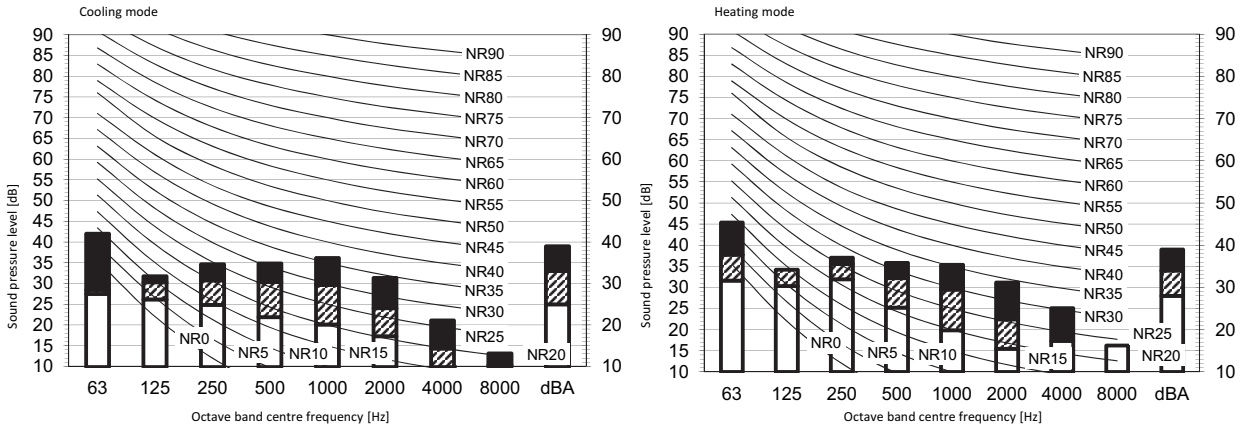
**3D097876**

# 8 Sound data

## 8 - 1 Sound Pressure Spectrum

8

### FTX20KV



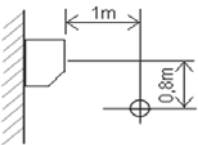
**Legend**

dBA = A-weighted sound pressure level (A scale according to IEC).

**A Scale**

- B High-tap
- C Medium-tap
- D Low-tap

Location of microphone



Cooling		Total dB	
A	B	C	D
dBA	39	33	25

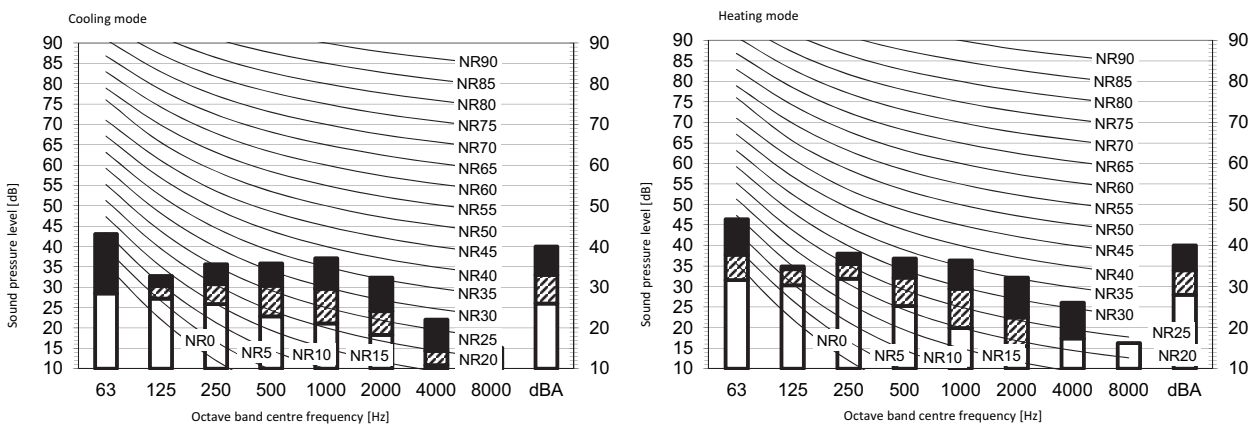
Heating		Total dB	
A	B	C	D
dBA	39	34	28

**Notes**

1. Operating conditions: power source 220-240 V/220 V 50/60 Hz; JIS standard
2. Background noise already taken into account.
3. Operating noise varies depending on operation and ambient conditions.
4. The operation noise measuring method is in accordance with JISC9612.
5. Measuring location: anechoic chamber

3D099188

### FTX25KV



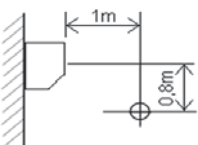
**Legend**

dBA = A-weighted sound pressure level (A scale according to IEC).

**A Scale**

- B High-tap
- C Medium-tap
- D Low-tap

Location of microphone



Cooling		Total dB	
A	B	C	D
dBA	40	33	26

Heating		Total dB	
A	B	C	D
dBA	40	34	28

**Notes**

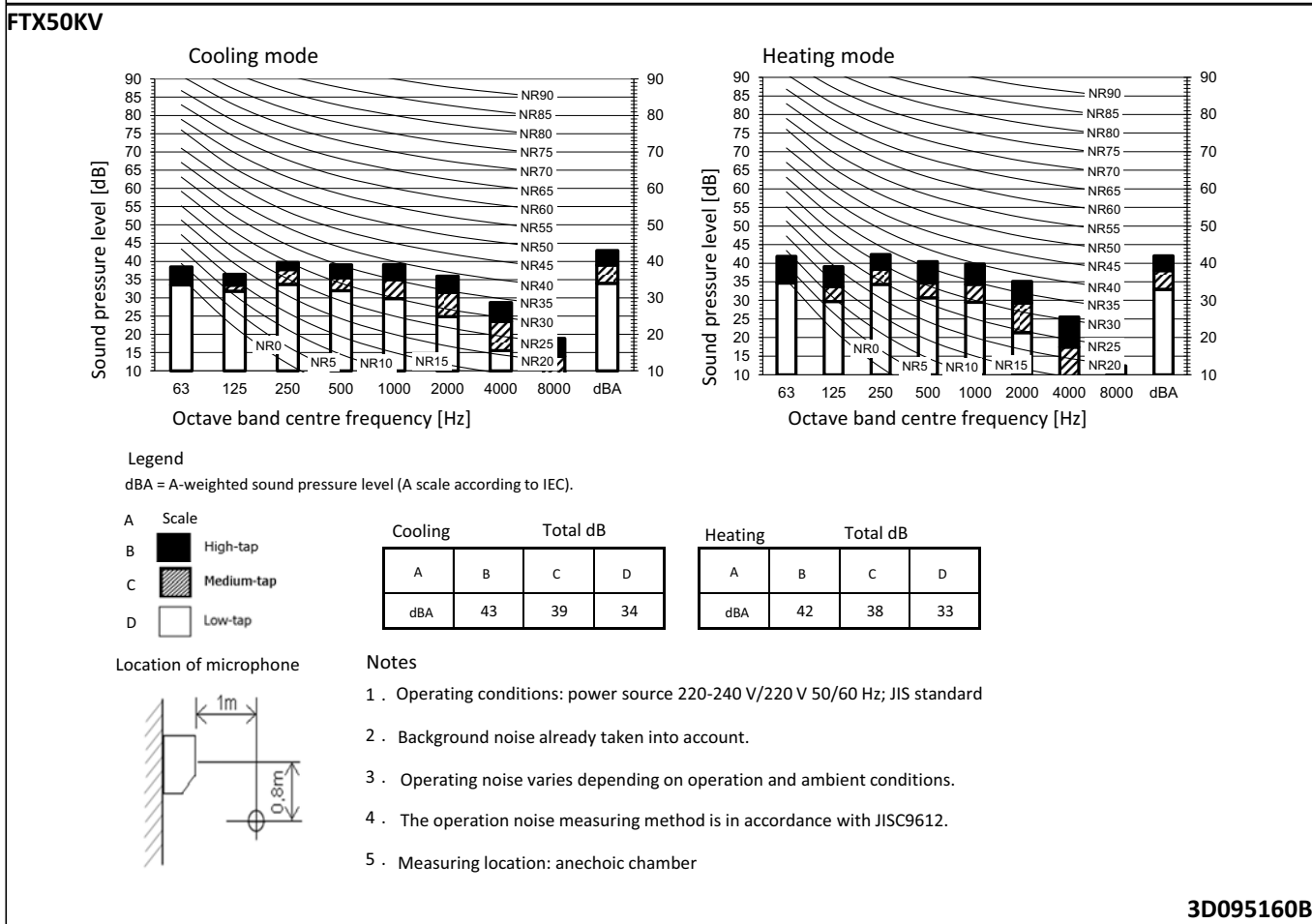
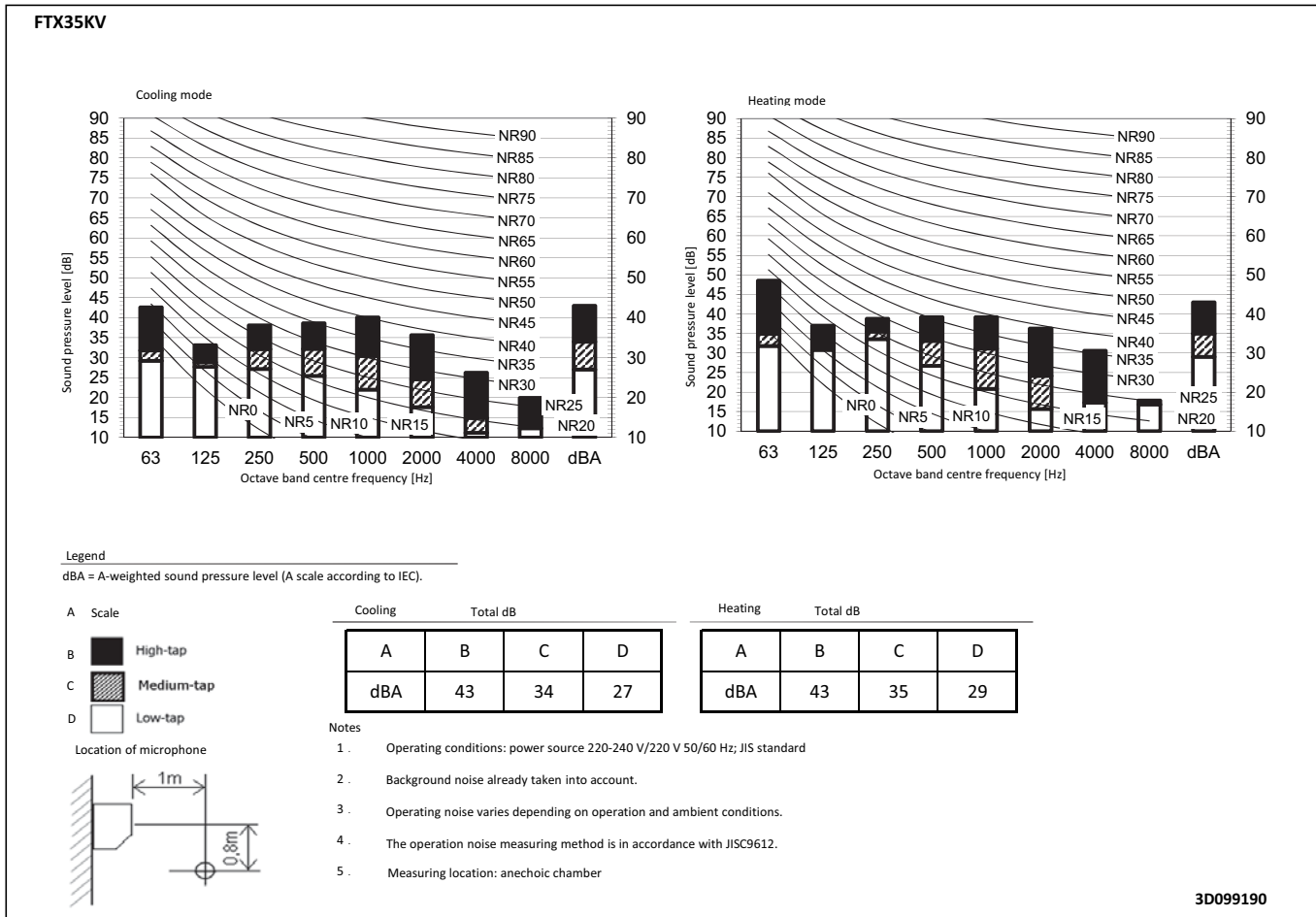
1. Operating conditions: power source 220-240 V/220 V 50/60 Hz; JIS standard
2. Background noise already taken into account.
3. Operating noise varies depending on operation and ambient conditions.
4. The operation noise measuring method is in accordance with JISC9612.
5. Measuring location: anechoic chamber

3D099189



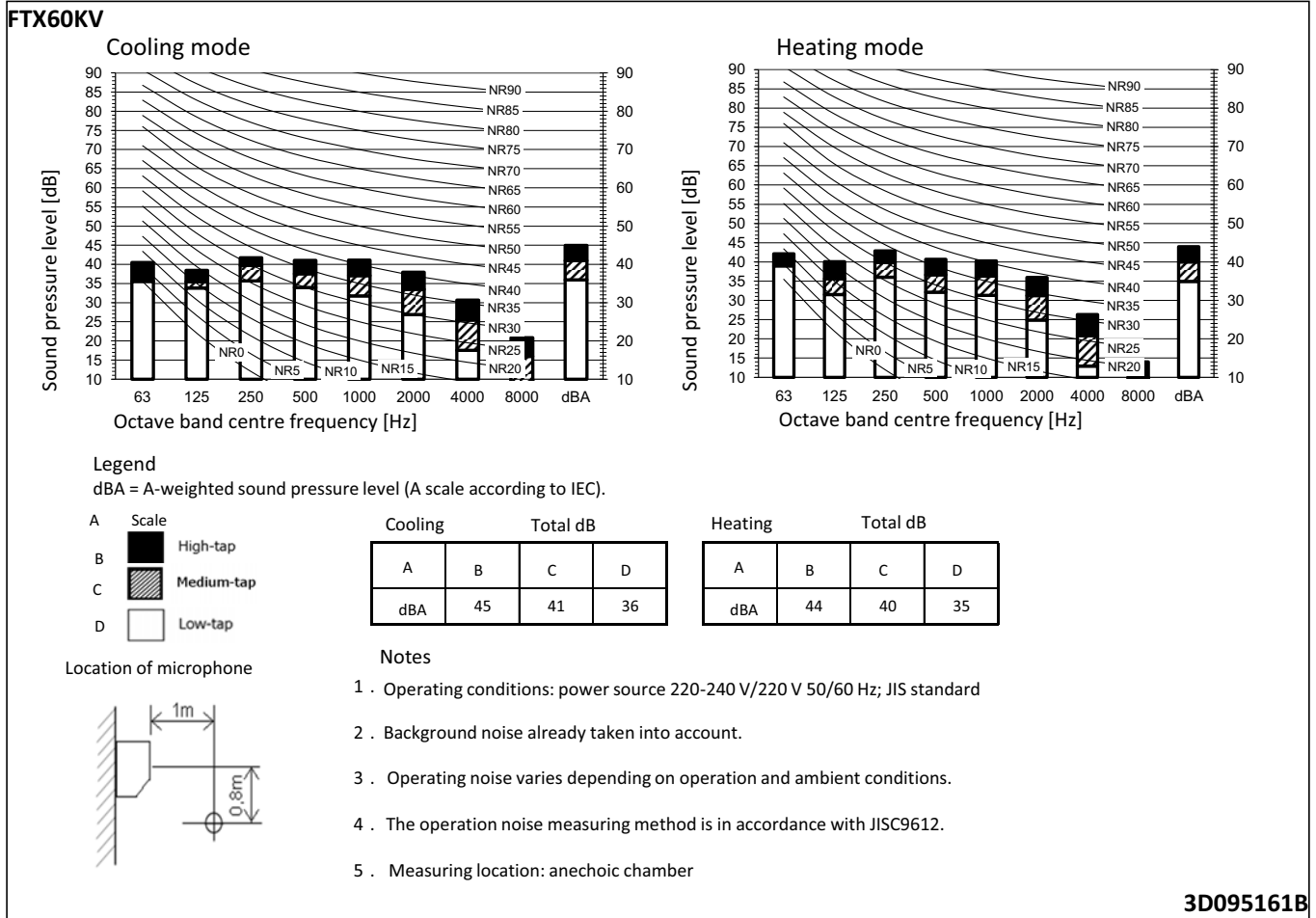
# 8 Sound data

## 8 - 1 Sound Pressure Spectrum

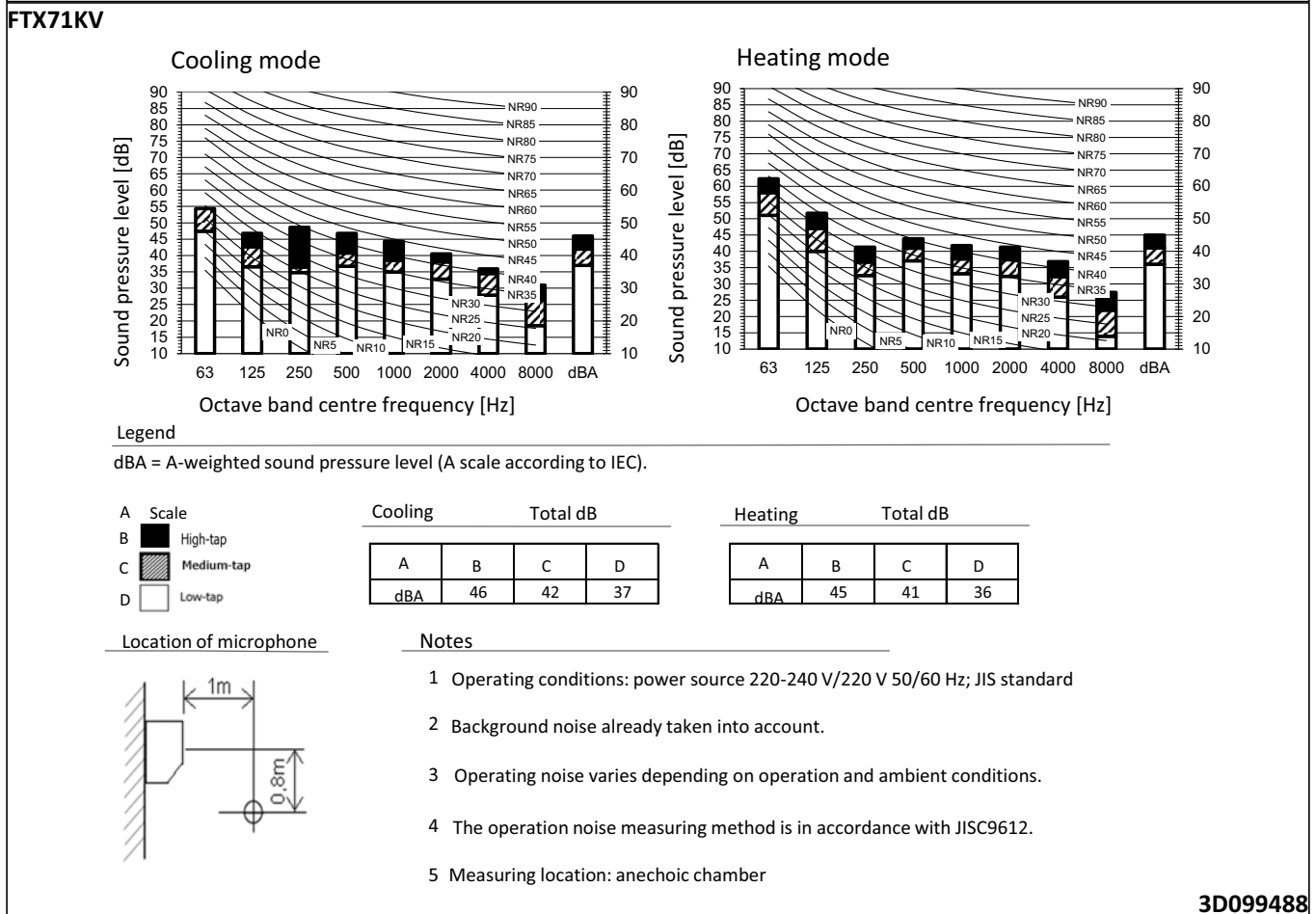


# 8 Sound data

## 8 - 1 Sound Pressure Spectrum



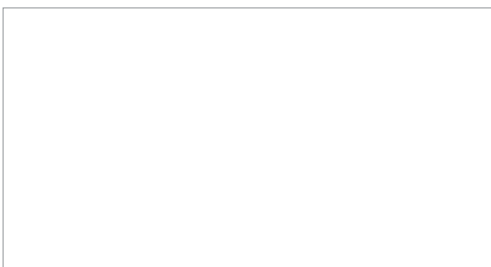
3D095161B



3D099488



Daikin Europe N.V. Naamloze Vennootschap - Zandvoordestraat 300, B-8400 Oostende - Belgium - [www.daikin.eu](http://www.daikin.eu) - BE 0412 120 336 - RPR Oostende



EEDEN18 12/17



Daikin Europe N.V. participates in the Eurovent Certified Performance programme for Liquid Chilling Packages and Hydronic Heat Pumps, Fan Coil Units and Variable Refrigerant Flow systems. Check ongoing validity of certificate: [www.eurovent-certification.com](http://www.eurovent-certification.com)



The present leaflet is drawn up by way of information only and does not constitute an offer binding upon Daikin Europe N.V.. Daikin Europe N.V. has compiled the content of this leaflet to the best of its knowledge. No express or implied warranty is given for the completeness, accuracy, reliability or fitness for particular purpose of its content and the products and services presented therein. Specifications are subject to change without prior notice. Daikin Europe N.V. explicitly rejects any liability for any direct or indirect damage, in the broadest sense, arising from or related to the use and/or interpretation of this leaflet. All content is copyrighted by Daikin Europe N.V.